

2013

**1st “Open de France”
Aerobatic Championship 2013,
Châteauroux FRANCE
Bulletin No.1**



19th – 21th AUGUST, 2013

Chateauroux Villers

FRANCE

1. GENERAL

1.1 Organizer

1.1.1 The 1st "Open de France" Aerobatic Contest 2013 will take place under the auspices of the French Aeronautic Federation (F.F.A.)

1.1.2 The operational organizers are F.F.A. and "Aéro-Club de Chateauroux".

1.2 Place and Date

1.2.1 The event will take place at Chateauroux-Villers Airfield (LFEJ).

Information about the airfield:

Airfield	:	Chateauroux Villers (LFEJ)
Location	:	6 km NW Châteauroux (36 - Indre)
ATS	:	NIL.
Night VFR	:	Not approved.
VFR	:	see GEN VAC in annex.
MET forecasts	:	At Chateauroux Déols
Customs, Police	:	NIL.
AVT	:	100 LL (see ACB).
SSLIA	:	Level 1.
Repairs	:	NIL.
Phone Air Club FFA	:	+33 254 366 813
Oil grades	:	possible Total AERO DM
Hangar	:	possible at Châteauroux Déols (LFLX)
ALT AD	:	542 ft (20 hPa)
LAT	:	46 50 27 N
LONG	:	001 37 12 E
APP	:	NIL
TWR	:	CHATEAUROUX Tower: 125.875 MHz
A/A	:	123.5 MHz

1.2.2 The event will take place in the period of time: from 18th AUGUST till - 21th AUGUST 2013.

1.2 Training Flights

Training flights on site are not allowed in the period preceding the contest.



1.4 Schedule: 19th - 21th August (MON - WED)

18th August (SUN)

Arrivals, Registration before 6.0 p.m.
06:30 p.m.: Opening Briefing;

19th August (MON)

08:00 a.m.: Briefing;
09:00 a.m. – 01:00 p.m.: Competition flights;
01:00 p.m. – 02:00 p.m.: Lunch break;
02:00 p.m. – sunset: Competition flights.

20th August (TUE)

08:00 a.m.: Briefing;
09:00 a.m. – 01:00 p.m.: Competition flights;
01:00 p.m. – 02:00 p.m.: Lunch break;
02:00 p.m. – sunset: Competition flights.
05:30 p.m.: Awards

21th August (WED)

08:00 a.m.: Briefing;
09:00 a.m. – 01:00 p.m.: Competition flights;
01:00 p.m. – 02:00 p.m.: Lunch break;
02:00 p.m. – Competition flights.
05:30 p.m.: Awards

Note: See the scheduled flights on the FFA web site [Page "Sports aériens", Compétitions](#).
The above schedule may be changed due to weather / technical / organizational reasons.

2. REGULATIONS

2.1. Rules

The 1st "Open de France" Aerobatic Contest 2013 will be conducted according to the following rules:

- FFA Sporting Aerobatic Code;
- FAI Sporting Code – Section 6;
- Flight Rules published by the Civil Aviation Authorities of FRANCE;
- Local Regulations.

3. OFFICIAL LANGUAGE

The official languages during the 1st "Open de France" Aerobatic Championship 2013 are French and English.

4. PARTICIPATION, COMPETITORS AND AIRCRAFT

4.1 Participants

Only foreign pilots at "Advanced and Unlimited" levels can participate at the 1st "Open de France" Aerobatic Contest 2013.

→ They shall have:

- a valid Pilot License;
- a valid personal insurance policy;
- a medical certificate to practice aerobatics
- an authorization to aerobatic flying on French territory, delivered by the French Civil Aviation Authority (see 4.1.1) -- unfortunately maybe not for free ...
- a valid FFA sporting license 2013(see 4.1.2).

4.1.1 Authorization by French Civil Aviation Authority:

Please contact: Mr Hervé SACCO (French civil aviation authority)

Mail herve.sacco@aviation-civile.gouv.fr

4.1.2 FFA sporting license:

You can buy your FFA license (67 €) in a Air Club member of the FFA or when you will arrive at Chateauroux Villers contest place.

Please contact for procedure and more information: lfej@free.fr

4.2 Aircraft

4.2.1 All participating aircrafts shall satisfy performance criteria essential for competition flights for advanced or unlimited aerobatics.

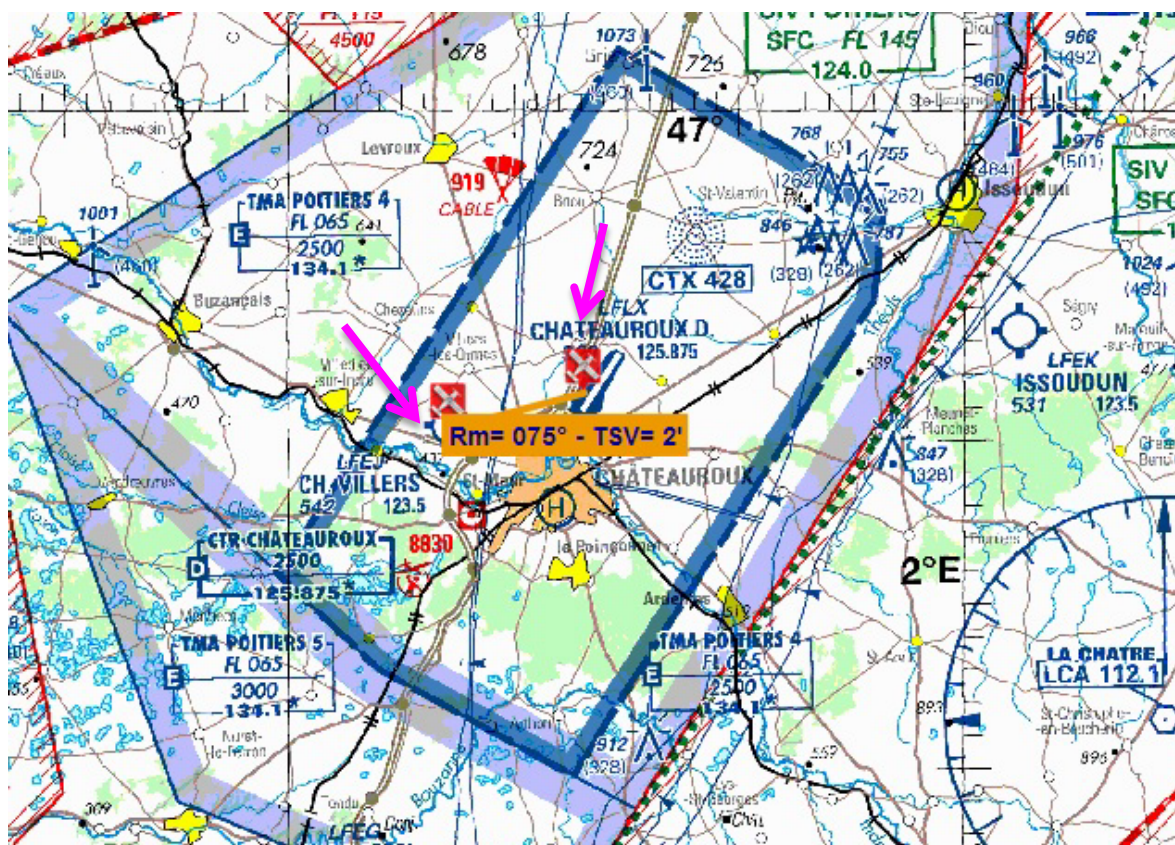
4.2.2 For all competing aircrafts a valid Certificate of Airworthiness of the related country shall be presented.

4.2.3 Hangar space for competing aircrafts will be available free of charge for the period of the Championship at Chateauroux Deols (LFLX).

This airport is near the airfield of championship: Distance = 4 Nm

If pilots want to stay on LFEJ, they must bring equipment needed to tie down on grass and to cover their aircraft.





5. ENTRY FEES

- Competitor: 150 € - EUR Payment by credit card on FFA website: www.ff-aero.fr or by cash (euro) on site of the event.

Participants shall pay:

- Fuel and oil for competition flights (only by cash on LFEJ / Credit card visa and Mastercard ou Total Card in LFLX)
- Accommodation: Choosing and booking at on your initiative;
- Breakfast, Lunch and Dinner: Choosing and booking on your own initiative;
- Transportation between the airfield and places of accommodation;

6.2 Procedure and deadline for the Entries

6.2.1 Procedure for the Entries: registration on FFA Website:

http://www.ff-aero.fr/FR/frm_Sports_Volt_Competition.awp

6.2.2 Deadline for Preliminary Entries: **11th August 2013**

6.2.3 The Official Entry Forms as well as the Entry Fees and Participant's Questionnaires have to be provided to the Organizer no later than **11th August 2013**

6.2.4 Any delays up to 11th August will be charged additionally 30 € of Entry fee.






7. HOTEL AND TRANSPORT:

7.1- Hotels:

Choosing and booking on your own initiative;

Below is a list of hotels close to the airfield to help you (at exit 12 on A20 motorway):

Hotels	Address and Location	Website
	Rue Georges HENNEQUIN ZA DE L'ECOPARC 36130 - DEOLS TEL : (+33)892683253 GPS: N 46°51'5.28" E 001°42'13.88"	http://www.ibis.com/fr/hotel-3495-ibis-budget-chateauroux-deols-ex-etap-hotel/index.shtml
	B&B Hôtel CHATEAUROUX 1 Rue Georges HENNEQUIN ZA de l'ECOPARC 36130 DEOLS Tél: 08 92 70 75 22 Fax: 02 54 07 04 75 Mail : bb_4702@hotelbb.com GPS: N 46°51'5" E 001°42'16"	http://www.hotel-bb.com/hotel_info?hotelId=4702
	B&B CHATEAUROUX 2 Rue Georges HENNEQUIN ZAC de l'ECOPARC 36130 DEOLS Tél: 08 92 78 80 30 Fax: 02 54 60 48 00 Mail : bb_4192@hotelbb.com GPS: N46°51'4" E001°42'16"E	http://www.hotel-bb.com/hotel_info?hotelId=4192
More choices on city of Chateauroux : http://www.pagesjaunes.fr		

7.2 – Restaurant

Many restaurants near the hotels.

7.3 – Transport:

A carpool with volunteers and participants will be introduced between hotels and airfields.



8. CONTACT:

Fédération Française Aéronautique

155 Avenue de Wagram

75017 PARIS

Contest director : M. Guy AUGER email : guy.auger31@orange.fr

Directeur technique national : M. Loïc LOGEAIS email : dtn@ff-aero.fr

Conseiller technique national : M. Jérôme HOUDIER email : jerome.houdier@ff-aero.fr

Informations :

http://www.ffa-aero.fr/FR/frm_Sports_Volt_Competition.awp

Contest results : <http://aerobatics.mwebservices.net/>



CHATEAUROUX VILLERS

AD2 LFEJ TXT 01

03 JUN 10

Consignes particulières / Special instructions

Consignes générales d'utilisation de l'AD

Manche à vent : possibilités d'indications erronées par vent de SE.

Dangers à la navigation aérienne

L'attention des pilotes est attirée sur l'existence de procédures IFR et d'entraînement gros porteurs sur l'aérodrome voisin de CHATEAUROUX-DEOLS.

Absence de visibilité entre les deux seuils de piste, une extrême prudence est recommandée.

Procédures et consignes particulières

Roulage interdit hors piste et TWY.

Consignes applicables lorsque la CTR de CHATEAUROUX est active :

Secteur Ouest : entrée/sortie de CTR en VFR et VFR Spécial jusqu'à VH 1500 m (hélicoptères : 800 m) contact radio obligatoire auprès de CHATEAUROUX Tour avant d'intégrer le circuit d'aérodrome ou en sortie de circuit.

Autres secteurs : clairance obligatoire auprès de CHATEAUROUX Tour.

General AD operating conditions

WDI: possible wrong indications when SE wind.

Air navigation hazards

Pilots' attention is drawn towards the implementation of IFR and training procedures for wide bodied aircraft in the vicinity of CHATEAUROUX-DEOLS.

Lack of visibility between the two THR, extreme caution is required.

Procedures and special instructions

Taxiing prohibited except on RWY and TWY.

Instructions when the CTR CHATEAUROUX is activated:

West sector: Entering/leaving CTR in VFR and Special VFR VH more than 1500 m (HEL : 800 m) : compulsory radio-contact with CHATEAUROUX Tower before entering or leaving the AD circuit.

Others sectors: compulsory clearance of CHATEAUROUX Tower.

Informations diverses / Miscellaneous

HIV + 1HR / WIN + 1HR

Les informations de source non DGAC de cette rubrique sont communiquées sous toute réserve.

Non DGAC information in this document is communicated with all reserve.

1 - Situation / Location : 6 km NW Chateauroux (36 - Indre).

2 - ATS : NIL.

3 - VFR de nuit / Night VFR : Non agréé / Not approved.

4 - Gestionnaire / Managing authority : Communauté de l'Agglomération Castelroussine
24, rue Bourdillon BP 547 - 36018 CHATEAUROUX
☎ 02 54 08 70 30 - FAX : 02 54 08 70 35.

5 - AVA : Délégation Centre (voir / see GEN).

6 - BRIA : LE BOURGET (voir / see GEN).

7 - Préparation du vol / Flight preparation : Acheminement PLN VFR / Addressing VFR FPL : voir / see GEN 12.

8 - MET : VFR : voir / see GEN VAC.

IFR : voir / see GEN IAC.

Station : NIL

9 - Douanes, Police / Customs, Police : NIL.

10 - AVT : 100 LL - HX (voir / see ACB).

11 - SSLIA : Niveau 1 / Level 1.

12 - Pêril animalier / Wildlife strike hazard : NIL.

13 - Hangars pour aéronefs de passage / Transient aircraft hangars : Possible.

14 - Réparations / Repairs : NIL.

15 - ACB : de Châteauroux ☎ 02 54 36 68 13.

16 - Hôtels, restaurants : En ville / In town.



AMDT 07/10

© SIA



ANNEXE N°2

CHATEAUROUX VILLERS (LFEJ)

Cadre de voltige / Box



Position Sud-Est et Nord-Ouest des juges en fonction de l'ensoleillement. Position Sud-Ouest des juges par vent de travers.

